



# LED TUBE

# ANTI-MOSQUITO SWITCH 2in1

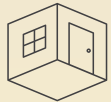


Human Friendly

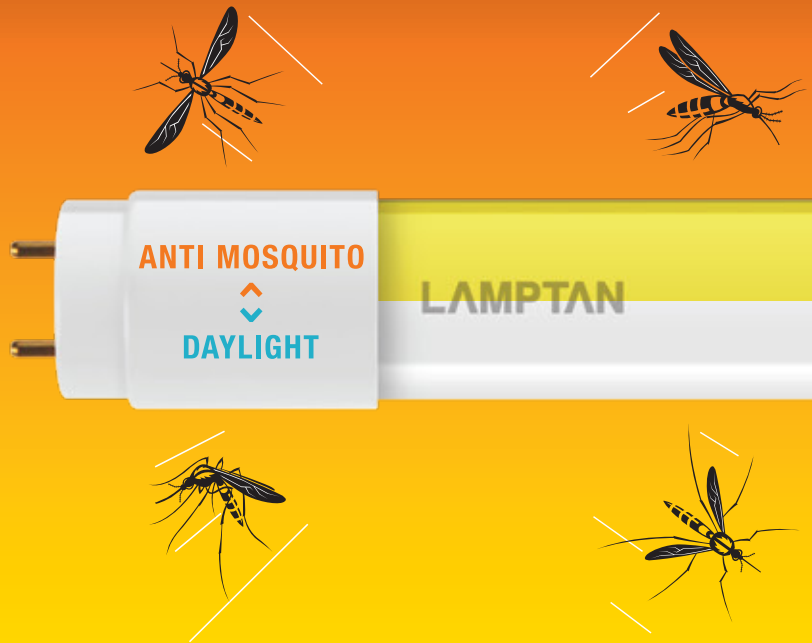
## LED TUBE

### ANTI-MOSQUITO SWITCH 2in1

LED Tube T8 Anti-Mosquito SWITCH comes with 2 features in one tube: it can be used as anti-mosquito and insect, and a normal light bulb that provides general brightness, it can easily switch the type of light with existing switch in your home. The original tubes can be replaced immediately without changing for new socket. Simply turn on/off and turn it on again, the lamp will switch color between DAYLIGHT << >> Anti-Mosquito.

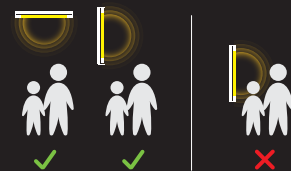
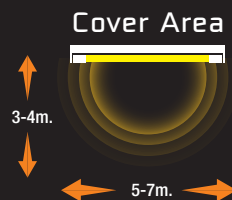


NORMAL LIGHTING



### Unique Function

Switch 2 colours by home switch.  
Fluorescent T8 replacement.  
Daylight « » Anti Mosquito



Please install higher than head.



Rate (W)	Voltage(V) Frequency(Hz)	Flux (lm)	Colour	Colour Temp (K)	RA	Power Factor	Beam Angle (degree)	Lifetime (hours)	Lamp Base	Driver	Dimension (w x l x h : mm.)	Weight (g)	Package size (pieces : mm.)
9	220-240 50/60Hz	900	Daylight ↓ Anti-Mosquito	6500 ↓ 1800	>80	0.5	220	15000	G13	Double Ended	28x584.4x600	118	1 pc : 615x26x26 10 pcs: 630x145x65 30 pcs: 645x165x230
18	220-240 50/60Hz	1800	Daylight ↓ Anti-Mosquito	6500 ↓ 1800	>80	0.5	220	15000	G13	Double Ended	28x1184.4x1200	212	1 pc : 1220x26x26 10 pcs: 1230x145x65 30 pcs: 1255x165x230